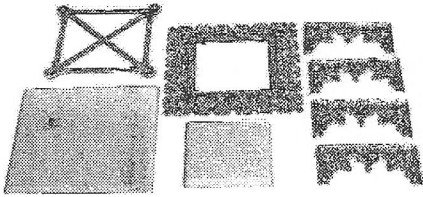
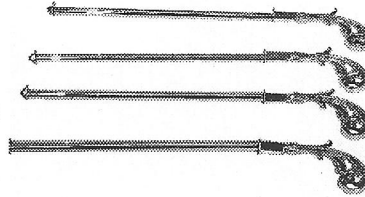
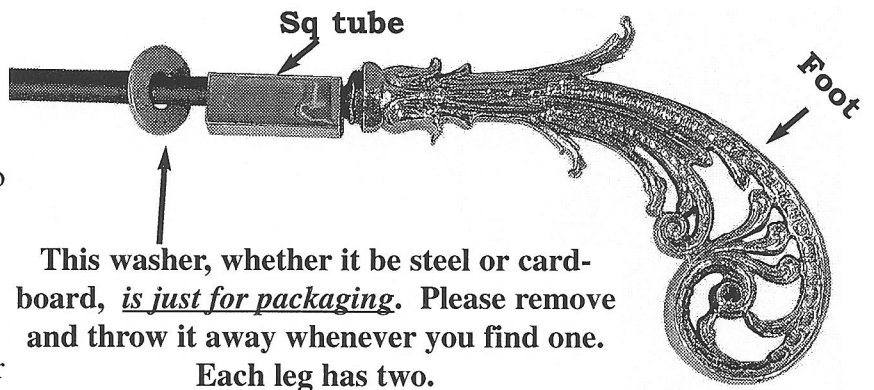


Table parts....note screws on marble should be there too.

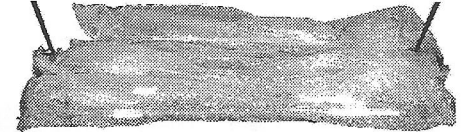


Brass Table
Instructions
Each table comes as two packages. Each package should have the same number of it.

#4 goes with #4 etc. This means that this table has been previously assembled for alignment and then dis-assembled again for shipping. Therefore, it is important that you assemble the table EXACTLY like we did, or you will end up with a crooked table that does not go together well. Please see alignment marks below.

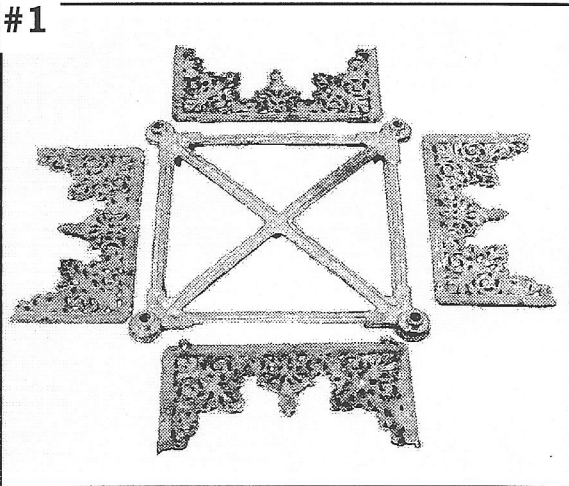


Leg parts....note washers should be dis-carded. Not used.



Therefore, it is important that you assemble the table EXACTLY like we did, or you will end up with a crooked table that does not go together well. Please see alignment marks below.

#1

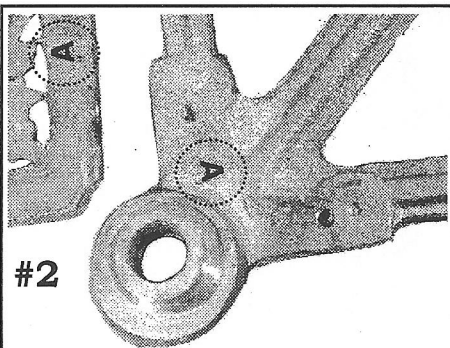


Before assembly, lay out the table top as in picture #1.

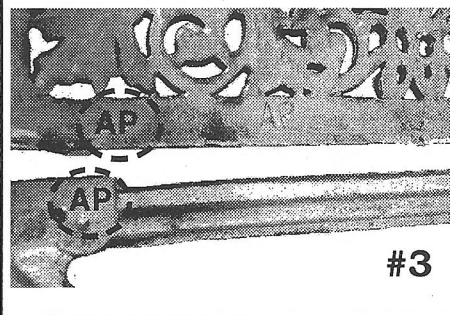
Be sure that you note that each side panel is "keyed" to each side of the table top with alignment marks as in pictures #2 and #3.

Use the supplied screws as in package #4

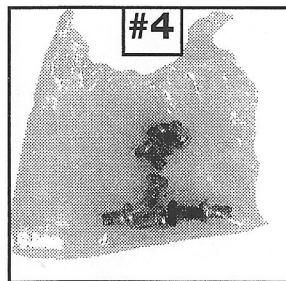
IF, you have aligned the sides properly, you should end up with a completed top as in picture #5.



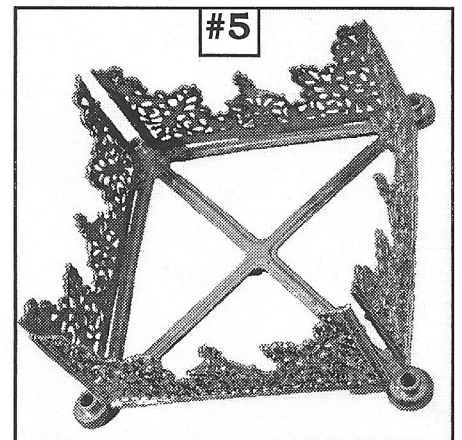
#2



#3



#4



#5

The following steps are best accomplished with two people. One person can hold the table steady while the other assembles the remaining parts.

Taking the bottom tier of the table, The metal rod, of the four legs, is passed thru each hole. Below this tier should only be the “foot” and the short piece of square tubing. As in picture #7.



Picture #8,,,,,

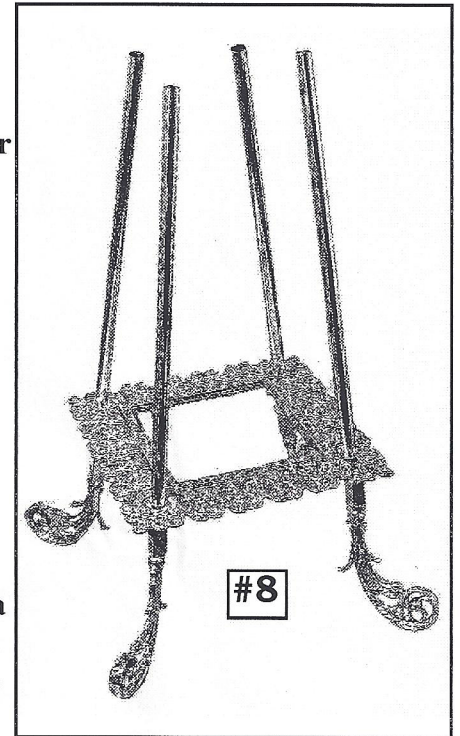
Add the round tubes above the bottom tier.

This is all very loose now and very much better if someone is helping you.

Take the completed top from picture #5 and start to feed each threaded rod thru the top corner. Align the feet as you do this. Make sure that the round tube fits over the raised “boss” for them.

Hint:

It is best to put each nut onto each rod just a couple of threads until all four nuts are threaded on. In this way, you do not tighten one nut, and tweak the table. You can make the table crooked if you tightened a nut too early. See picture 8 and note that the nut should go below the surface of the table top. See also one of the locating pins (picture #8) for the marble top.



Once you are satisfied that the table is all aligned, tubes are over the bosses, and nothing is cross threaded.....you can tighten all the nuts. A 11/16” socket works well.

Your resulting table should look like picture #9 and with the addition of the two marble tiers....it should look like #10. Remember....the marble top has holes to fit the pegs of the table for a nice stable fit.

