

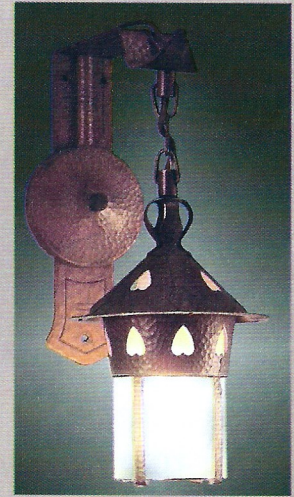
# Stickley Chandeliers & Pendants



405-PAC-CH



WITH PURCHASE OF ANY LIGHT FIXTURE



400-MACS



409-NAC-CH



403-TAC-CH



402-NEWL  
Shown Installed



401-MAC-EP

**Gustav Stickley** and the company that bore his name are credited for putting Arts & Crafts into the American culture. We have reproduced one of his popular lights called "The Heart" light. We offer it as three chandeliers as well as a sconce and single hanging light. These high quality fixtures are produced the same way the originals were; made from solid copper, and formed to shape and design by hundreds of hammer blows from skilled craftsmen. These are not cheap, cast fixtures. We even have hand made the copper chain. The patina is like that of a Stickley antique original then lacquered.

**400-MACS** Sconce. Backplate 2 3/4" wide with a 4" mounting circle, 10" high with an 8" protruding arm. Lantern is 8" high by 3" diameter glass. Overall height is 13 1/2" All Stickley lights come with frosted glass or amber shade, please specify when ordering.

\$695.50

**401-MAC-EP** Pendant. Ceiling canopy is 4" diameter. Overall length is 25 1/2". Lantern is 8" high by 3" diameter glass. Arts and Crafts homes used these in multiples along a beam, over a work area.

\$522.50

**402-NEWL** Newell post light. This classic arts & crafts piece measures 10" high x 6" diameter at the top. Shown here atop a wooden newell post (*not included*).

\$550.00

**403-TAC-CH** Three light chandelier. 35" high (can be shortened to 29"), 16" diameter. Each heart lantern accepts up to a 100 watt bulb.

\$1,284.40

**405-PAC-CH** Five light chandelier. 47" high (can be shortened to 36"), 23 1/2" diameter. Each heart lantern accepts up to a 100 watt bulb.

\$2,194.40

**409-NAC-CH** Nine light chandelier. 52" high (can be shortened to 41"), 33" diameter. Each heart lantern accepts up to a 100 watt bulb.

\$3,884.40

*Enlarged solid copper chain come on the 5 & 9 light chandeliers.*

*Lights are shortened by removing links of chain; which we can do for you. Lights can be lengthened by adding chain at additional cost.*