



74-PEH-DL



45
-MDS-
OR



46
-MDS-
FS

Our Deco Fixtures are all **Solid Brass** made by **Lost Wax casting....NOT...** aluminum or other "low quality" pot metal offered elsewhere.

Continuing variations of lights made by Lincoln Light Company, Circa 1930

Note that the lights on this page vary from the preceding page by one more light source. The bottom pierced brass or nickel bowl is now replaced by a lovely matching glass shade giving one more light source. Bulb is changed by un-screwing the bottom finial, removing the glass, to reveal the socket inside. *All sockets for all the lights on this page are rated for 100 watts each. All lights are UL approved.*



75-NPEH-DL

45-MDS-OR (brass) Deco sconce with orange shade: 13 1/2" x 5 1/2"

46-MDS-FS (nickel) Deco sconce with frosted shade: 13 1/2" x 5 1/2"

47-MDS-SF (brass) Deco sconce with frosted shade: 13 1/2" x 5 1/2"



68-HEP-DL

48-MDS-RO (nickel) Deco sconce w/-orange shade: 13 1/2" x 5 1/2"

66-SFH-DL Six light, Solid Brass Deco Light with 5 frosted slip shades and large matching center shade.

67-NSFH-DL Six light as 66 above but..Nickel plated w/-frosted shades

68-HEP-DL Six light, Solid Brass Deco Light having 5 slip type orange shades around the rim with large matching center shade to the bottom.

69-NHEP-DL Six light as 68 above but..Nickel plated w/-orange shades

Meas of: **66-SFH-DL**; **67-NSFH-DL**; **68-HEP-DL**; **69-NHEP-DL**; Six light Deco lights: Ht: 15" to 36"; adjust by cutting tube. Spread: 19"

Taller Deco 6 light, Ceiling Lights--five slip shades & bottom bowl

74-PEH-DL Six light, Solid Brass Deco Light: 5 slip frosted shades with a large lovely matching center bowl shade to the bottom.

75-NPEH-DL same as 74 but is now **Nickel Plated** and comes complete with frosted slip shades.

76-HEP-DL Six light, Solid Brass Deco Light having 5 slip orange shades with a large lovely matching center bowl shade to the bottom.

77-NHEP-DL same as 76 but is now **Nickel Plated** and comes complete with all five orange slip shades.

Meas: **74-PEH-DL** ; **75-NPEH-DL**; **76-HEP-DL**; **77-NHEP-DL**; Six light Deco's: Height: 38" to 48"; adjustable by chain links. This light can be shorter if the "short mounting kit" is used. See below. Spread: 19"

All deco lights are priced **COMPLETE** with the glass shades.



66-SFH-DL

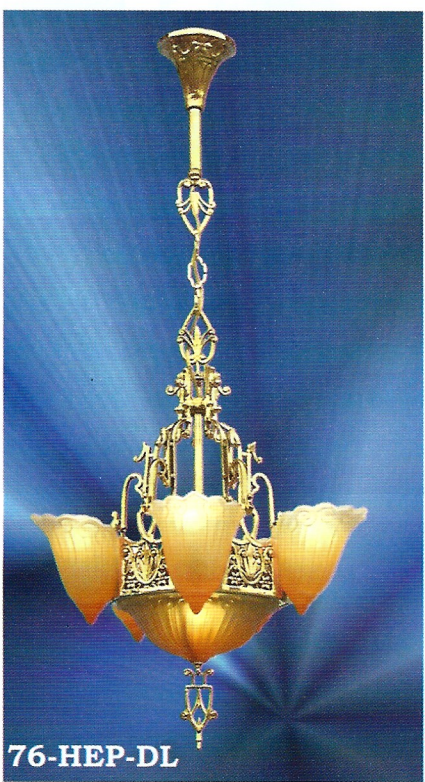
The "**low ceiling kit**" is an option to use when the ceiling is too low to take the normal length specified in the measurements above and the previous page.

See the picture of a typical installation below. Here the complete kit is used including the replacement of a shorter finial (not necessary if you can accept the longer finial height.)

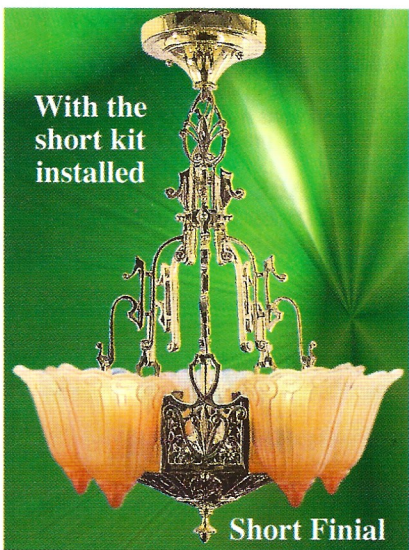
Resulting heights of the series are as follows:

70-73 lights become: 24" Overall tall.

74-77 lights become: 25" Overall tall.



76-HEP-DL



Short Finial



77-NHEP-DL