

2729-K



680-NPL-CH

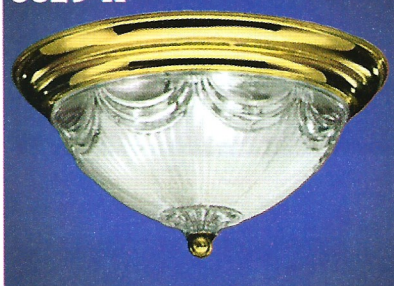


2726-K

53



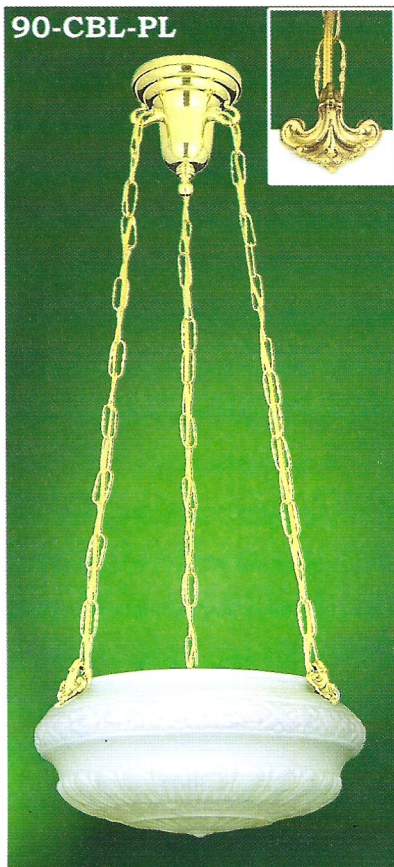
8829-K



92-CBL-FP



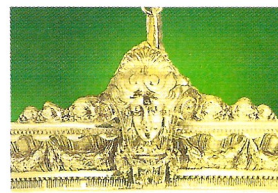
90-CBL-PL



675 -NPL-CH



675
29" tall
26.5"w



**Fine Lost
Wax Casting
Detail of
92-CBL-FP
ceiling bowl**

90-CBL-PL is attributed to Horn & Brannen, Phila.,PA. Please note the detail of this attractive bowl holder (inset). Set consists of chain, bowl holders and canopy and sockets. You could use it with any antique ceiling shade with a 12" to 18" dia. Length: 36" when used with our 091G but it can be shortened to 16", if necessary, by removing links from the embossed chain. Sockets for three bulbs, each rated at 100 watts. Canopy: 5" dia.

92-CBL-FP The enlarged detail picture, shows one of four fine female masks that graces the rim of this fixture. Originally made by: Robin Lighting of New York, Circa 1900. It has a length of 37" when used with our 091G but it can be shortened, to 18", by removing links from the embossed chain. It has sockets for four bulbs, each rated up to 100 watts. Canopy: 5" dia. Sold without the 091G glass shade so that you could use an antique shade, with a fitter size of 13.5" to 14" dia. Beautiful lost wax cast female mask rim un-matched by anyone.

2726-K Large Swirl art glass bowl in a 20" polished brass frame. 3 lights at 100 watts ea; 20" in height but chain can be added to give any height required. Extra lead wire is supplied for this purpose.

2729-K and 3828-K (not pictured) and 3829-K (also not pictured)--all look alike...different measurements 24% lead crystal bowl with a brass frame. For those who wish elegant simplicity. Available in three sizes as follows: **2729-K** 3 light; 100 watt each, 16 1/2" dia & 24" Ht. Chain can be added to 2729-K to give you longer drop lengths. Extra wire is supplied for the purpose of extending the drop of this light.

3828-K 2 lights at 150 watts each, dia 14 1/2" with a height of 13 3/4".

3829-K 3 light at 100 watts each, 16 1/4" dia with a height of 16 1/4"

In the same spirit of the 24% lead fixtures above, these lovely quality shades are available in flush mounting too. They all look alike so only one is shown to represent the series of: **8827-K (shown), 8828-K & 8829-K**

8827-K one light at 100 watts, 10 1/2" dia; 6 1/2" height (pictured)

8828-K two lights at 75 watts each max, 13" dia; 7" height (like 8827-K)

8829-K three lights at 75 watts each max, 15" dia; 8" ht; (like 8827-K)

675 and **680**, to follow, can be extended by chains to meet any ceiling height. Both have six porcelain sockets inside the bowl. Each socket rated 100 watts.

The Finest Art Nouveau hanging fixtures made in America

Pretty tall statement huh? Yes, but truthful. We have not seen anything to compare to these two beauties. The provenance originally came from a great antique light made in France during the height of the Art Nouveau period where, excepting Tiffany of New York, the very best Art Nouveau originated. Lost Wax cast bowl and elements. Carefully drawn period square tubing. Original thick cast shades in the manner of Daum Nancy. Simply beautiful.

675-NPL-CH The shorter version of the two. Six sockets rated at 100 watts each, 29" tall, 26 1/2" wide. Could be hung from a chain for longer drops.

680-NPL-CH For homes fortunate to have tall ceilings, this one is a treat. 38" tall, 26 1/2" wide. Just a masterpiece of lighting design. Incomparable.