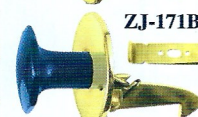
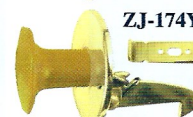
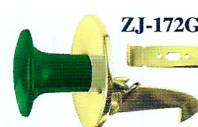
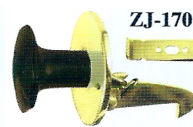
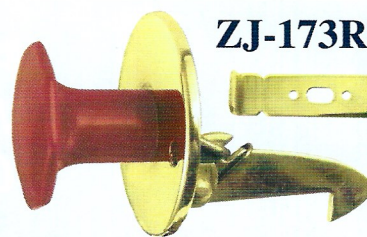


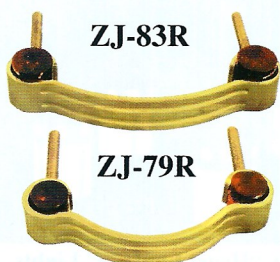
4



Real Bakelite cupboard latches

Available in all five colors to match our other bakelite hardware. Octagon knob Meas: 1" across the flats; protrudes 1". Hook protrudes 1 5/8" from the back-long enough for the thickness of a door and to reach a shelf. Catch is 1/2" wide by 1 1/2" long. Put the catch on the top of the shelf, or bottom, depending on how you rotate the latch. Metal that can be seen, after installation (even the hook), is solid brass. Bakelite colors: ZJ-170-black; ZJ-171B-blue; ZJ-172G-Green; ZJ-173R-red; ZJ-174Y-yellow. These have not been offered since 1930

Bakelite Doorbell Pushbuttons Real Bakelite doorbells in five colors. 3 1/2" tall by 2 3/4" wide. Recessed name card slot 2" wide by 3/4" tall. A recreation from the 1930's complete with angular diamond motif decor to the sides. A wonderful finishing touch

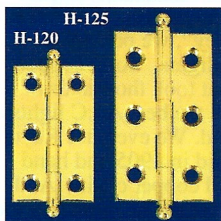


ZJ-79R (2.5"cc) & ZJ-83R (3"cc)

Matching solid brass deco or waterfall handles w/-nice authentic inserted 1930's plastic posts. Sizes: **ZJ-79R** 3" w x 3/4" tall; 2 1/2" c/c. **ZJ-83R** 3 3/4" w x 3/4" tall; 3" c/c

Extruded Ball Tip hinges-not stamped

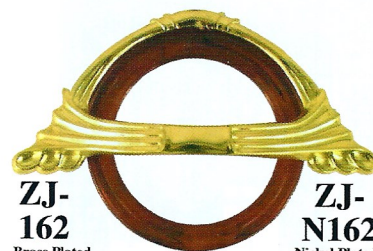
H-120 2" x 1 1/8" Ball tips add 0.2" ea
H-125 2 1/2" x 1 3/8" Ball tips add 0.28" ea



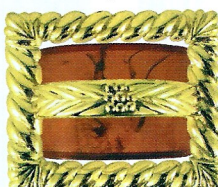
ZLW-232 Lost Wax cast brass, Ribbon & Wreath pattern, Louis style bail with torch/snake head motif mounts. 4 1/8" wide by 2 1/4" tall; 3" cc. Polished Brass

Waterfall Furniture Handles-Plastic inserts

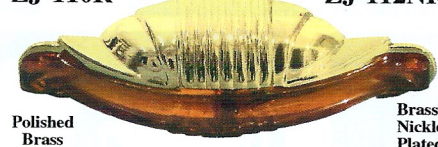
Precision cast, plated zinc like the old ones
ZJ-160 5 3/8" w by 2 1/8" t. 2 1/2" c/c
ZJ-N160 is same handle-nickel plated
ZJ-161 4 5/8" w by 3" t. 4" c/c boring
ZJ-N161 is same handle-nickel plated



ZJ-162 5 1/4" w by 2 3/8" t; 2 3/4" c/c
ZJ-N162 is same handle-nickel plated
ZJ-163 3" w by 2 1/2" t; 2 1/2" c/c
ZJ-N163 same handle but nickel plated



ZJ-110R



ZJ-112NR

Brass-Nickel Plated

Wrought Brass Handles

ZJ-110R Pol solid brass

ZJ-112NR Brass with nickel plating
OA: 5" x 1 1/2"
Screws: 4 1/2" c/c

Authentic 1930 type plastic inserts with some marble pattern-pattern varies. Made like the originals

ZJ-163...brass plated
ZJ-N163...nickel plated

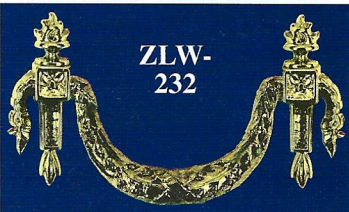
ZJ-160

Brass Plated



ZJ-N160

Nickel Plated

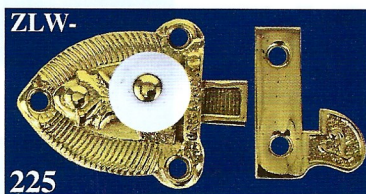


D-17

Authentic brass reproduction of a spool cabinet pull. Reversible-either left or right hand.



Says: "Clarks Mile-End" on each pull. Mounts w- 2 sm round head screws. Backplate: 2 1/8" w by 1 1/8" tall. Footprint: 2 1/4" wide x 1 3/8" tall



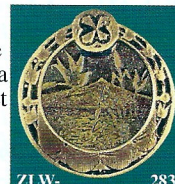
225

Supremely Aesthetic

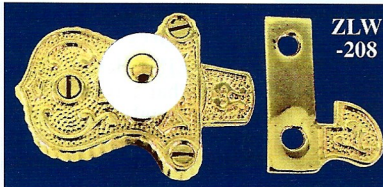
These two wonderful pieces are like miniature paintings set off by their bails-- Antiqued

ZLW-283 Lost Wax cast brass ring pull OA size: 1 1/2" wide by 1 3/4" tall; Mounts with one screw at the top. Ring is offset from the backplate 3/8" giving a 3D effect. Backplate has a lake scene of cattails; a mountain; a bird in flight & lilly pads. More like art than hardware

ZLW-284 Lost Wax cast brass handle set. OA size: 3 1/2" w by 1 5/8" t; 3" c/c. Scenic Backplate: a rippled lake scene including bamboo; a mountain; a standing egret & an oriental fan motif below the entire scene. Wonderful



ZLW-283



ZLW-208

ZLW-208 Very interesting early Eastlake cabinet latch w/-porcelain knob. Note we have the original catch plate, which is hard to get with antique latches. This latch has an interesting mounting. The back wood screw, behind the knob, also acts as the pivot pin for the latch. There is no riveting. Latch size: 1 3/4" w x 1 5/8" tall. Tongue protrudes an additional 1/2". Catch: 1 5/8" tall x 1" wide

ZLW-225 Another early Victorian latch with porcelain knob. Latch: 2" w x 1 3/4" t and tongue protrudes an extra 1/2". Catch 1 5/8" x 1". Both of these latches are nicely Lost Wax cast brass. Supplied in a polished finish

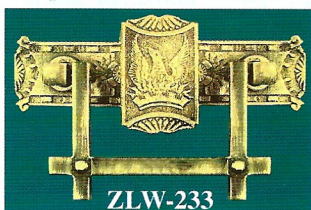
Top Quality Lost Wax Handle sets

For years the only reproduction handle sets available were those used on cheap oak furniture made at the turn of the century. No one dared make a high end handle set for the finest walnut or mahogany Americana Furniture. We decided to change that and now bring you a few Lost Wax cast historic handles. While not cheap they are more suitable for top quality Americana victorian furniture, made before the mass produced red oak coupon furniture

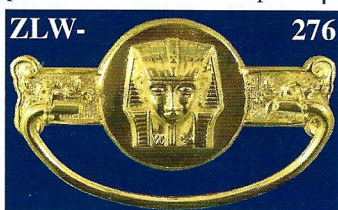
ZLW-233 Lost Wax cast brass "Phoenix rising from the flames" motif handle set-nicely antiqued. It boasts square made posts matching the bail. OA size: 3 3/4" wide by 2 1/4" tall; 2 1/2" cc

ZLW-276 Lost Wax cast brass King Tut polished handle set: 4" wide x 2" tall; 3" cc. Bail is stamped mounted on cast posts

ZLW-277 Lost Wax cast brass owl and tree limb motif handle set antiqued. 5" w x 2 3/8" t; 3" cc. Stamped bail-mounted on cast posts



ZLW-233



276



ZLW-

284



ZLW-

277