

**ZLW-223M and, ZLW-224F**

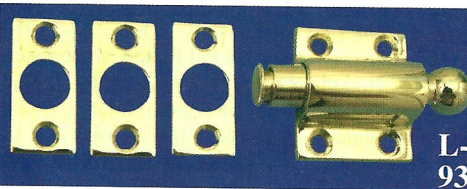
**Lost wax cast, Oval silhouette, curtain tie backs**

Approx 5" x 3 5/8" oval head curtain tie backs picturing a nice Victorian couple. He in his felt top hat and ruffled shirt and her in her knit bonnet and curls. Cute couple. Solid brass, made by Lost Wax casting and then darkened with a high low finish. The shaft is very sturdy & has a square section, for tools, to help with mounting.



**ZLW-213B**

**ZLW-213B** Continuing to recreate the finest figural bin pulls of the Victorian era...we present this fine portrait bin pull. Note the detailed ends, the face and design clarity that only Lost Wax casting can produce. 4 1/2" w by 2" tall; Screws at 4" c/c. Hi/lo finish and Lacq.



**L-93**

It is a 1/2 mortised lock but only needs a depth of 1/4" 1 1/4" wide. Catch is 1" x 1/4". Key: 1 1/2" long. If you want a cheap lock...forget it--buy European. This is quality here.

**L-93** Sash lift stay to lock the sash in 3 different positions. Two mounting methods: 1) mount the lock to the bottom sash (same surface as window lock) and the catches onto the upper sash....or...2) mount the lock to the jam, catches to the sash. Spring loaded and locking "retracted" ability. Latch case: 1 1/4" wide x 1" long. Bolt protrudes 3/8" but flush with the case, when retracted & locked. 3 Catches: 1 1/8" x 1/2"



**L-81D**

**ZLW-209**

old stock) which are parts--never used and still in the original wrappers ...to recreate. LW cast..very nice. 3 1/2" x 2"; lost wax cast; hi/lo finish.

**ZLW-217** Small German sheppard (wolf ?) head door knocker. Mounts onto the surface of a door with 2 wood screws thru the sub-plate which is accessible by lifting the dog's head. 3 1/4" tall x 1 5/8" w LW cast; hi/lo finish.



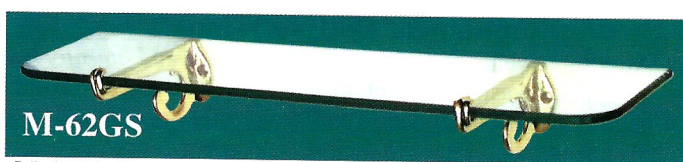
**ZLW 216S**

The famous "Cutty Sark" 3D door knocker. 3D ? Yes, it can only be cast by Lost Wax, in one piece, due to the projecting spinnaker type sails. The legend below the ship is perfectly legible. Mounts with 2 thru-door vertical screws at 6" c/c. 8" tall x 4 1/8" wide. Detail of ropes; sails; etc is wonderful. Hi/lo finish..the best ship doorknocker.



**S-A12**

**S-A12** How many dozen of times have we been asked for a small jewelry box lock over the last years ? Plenty ! Imagine our joy when we found NOS (new old stock) ones to duplicate. How nice and sweet these are and American too...not the ugly cheap European ones. only 1" tall !



**M-62GS**

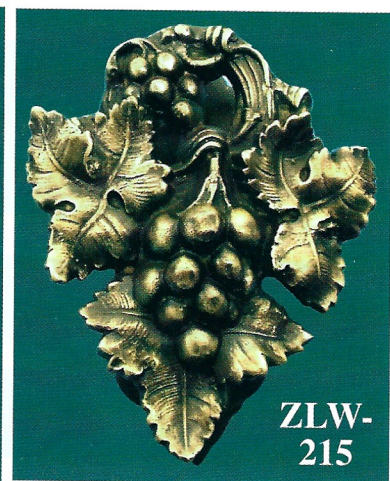
**M-62GS** Tempered Glass shelf with Lost Wax cast brass supports. The thought was to mount over a sink in the bathroom (under a medicine cabinet) but it can be used anywhere...even for display since it is so pretty. and the glass ( 4 3/4" deep x 20" wide ) is 5/16" thick (8mm). Brackets protrude 5 1/4". A little space clearance for the glass to accommodate un-even walls. Bottom hooks are also useful.



**ZLW-226**

Perhaps it was competition from a few vineyards that CA is becoming famous for, we're not sure, but it wasn't easy to buy. Mounts with 2 thru-door screws on 3" vertical c/c. Overall: 6 3/8" tall by 4 3/4" wide. LW cast; hi/lo lac finish.

**ZLW-226** Mythological face motif, handsome, door knocker. Mounts on the surface with 2 thru door screws on 1 3/4" vertical c/c. 8 3/8" tall x 3 1/2" wide. LW cast; hi/lo finish; lacq. Impressive



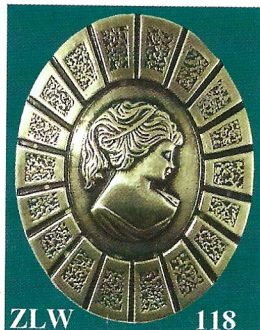
**ZLW-215**

**ZLW-215** Not much more of a Victorian motif than Grape & Leaf pattern. We bought the original at auction and the bidding was fierce.



**L-115SB** Sand cast stair bracket--Circa 1880. Projects from the wall: 2 3/4"; O/A ht: 5"; b/plate: 4" x 1 1/2"

**ZLW-118** Lost wax cast portrait handle. Approx: 3 1/8" x 2 1/2". Protrudes from the surface: 7/8" and mounts with



**ZLW 118**

two posts at the back with a vertical 2 1/2" c/c distance Hi/Lo finish-Lac

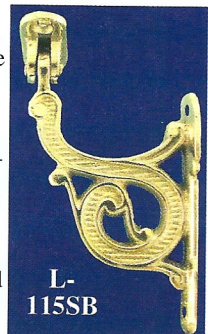
**ZLW-182** R&E Circa 1880 lion head stair bracket. Lost wax cast and very nice. Protrudes out 4" but 2 3/4" out to the center of the bracket that screws to the stair rail. Ht: 4"; Bplate: 3" tall by 1 5/8" max.

**ZLW-197VB & ZLW-199EB** Two very fine lost wax cast door bolts, with catches, for double doors, in two patterns. Both are 11 3/4" long-Hi/Lo finish-Lac. **ZLW-197VB** is 1" wide

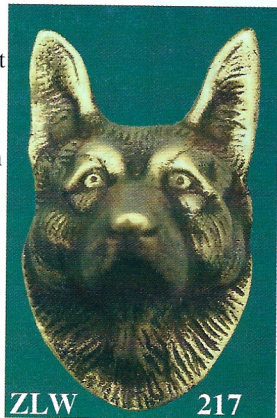
**ZLW-199EB** is 1 1/4" wide. Door bolts that have a flush operators were used on the edge of the door while ones with knobs that protrude were used on the face of the door.



**ZLW-182**



**L-115SB**



**ZLW 217**