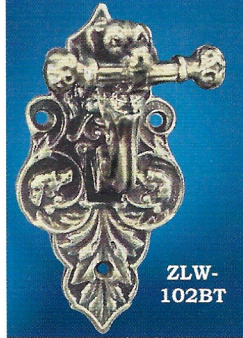




ZLW-69DB



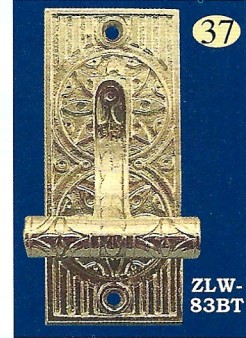
ZLW-102BT



ZLW-76BT



ZLW-79BT



ZLW-83BT

**ZLW-69DB**

This is a lever door bell from early America. It pre-dates the twist door bell that looks similar, but usually, is made so poorly by others.

Our lever bell is completely lost wax cast which makes it more pricey, but side by side with the competition, there is no competition! If you have a choice between this fine precision casting of obvious quality and a "lump" made by sand casting...the discerning customer will choose ours every time even at triple the price. This bell has an outside diameter of 4 3/4". Screw tabs add 1/2" each. The bell can be mounted directly for thru door working or used with a chain for offset mounting. Instructions & slot decor cover-supplied

**ZLW-76BT** Lost wax cast, solid brass, eastlake bell operator. It will work old bells or our fabulous lever bell. OA size: 2 3/4"w by 4 7/8"t

**ZLW-79BT** Lost wax cast Aesthetic Palm press bell operator. Works old antique lever bells or ours. 2 1/4" wide x 4 3/8" tall

**ZLW-83BT** Lost wax cast Aesthetic Palm press bell operator. Works old antique lever bells or ours. 1 3/4" wide x 4 1/8" tall

**ZLW-102BT** Uniqueness on a front door? Russell & Erwin's

doggy doorknob motif taken to the next step with a precision lost wax cast, lever bell operator. Works old lever bells or ours. 2 3/16" wide by 4 3/8" high. The operators handle is a dog's head that holds a stylized bone. Two dog's profile pictures are on either side of the handle and one larger full



ZLW-183BL

found one, is surmounted to the top of the plate. The antique sample was faced after more than a year of searching America and is considered the rarest lever bell operators in existence. We now have it and we are sharing our treasure with this exquisite reproduction. The finish is antiqued to mellow brown with brass highlights and then lacquered. Wonderful. If you like this doggie motif.. the rare Doggie doorknob is presented on the Russel and Erwin pages of this catalog.



ZLW-72BT



ZLW-38BT



ZLW-56BT

All twist door bell operators have steel 3/16" shaft installed

**Lost Wax Cast Twist Bell operators**

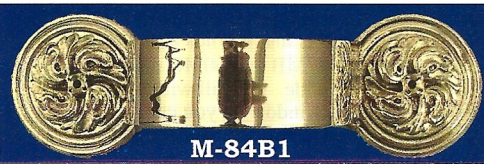
**ZLW-38BT** Intricate rococo style design. Circle bplate is ø2 3/4"

**ZLW-56BT** Simple bell twist operator with nice scroll decor. Plate: 1" x 3"

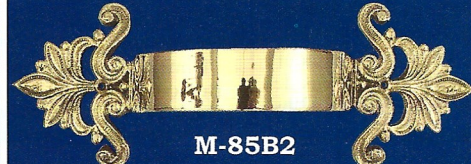
**ZLW-72BT** Nice Victorian style design with the word "Turn" at the top. Backplate is 2 1/2" dia

**ZLW-183BL** Lovely, Lost Wax Cast, victorian pattern twist doorbell. Note the incredible design clarity accomplished thru lost wax casting.

5 3/8" tall by 3 3/4" wide. Doorbell goes to the inside of the door while a twist bell operator goes to the outside of the door. All of our twist operators have a steel square shaft, which can be shortened to the proper thickness of a door. All are finely Lost Wax cast and they are the only ones on the market that are. Others, made by sand casting, are of such poor quality--I wonder just who would want them on their front door at all. If you are only going to put "one" of these on your door, to represent you, it should be the best. That is what we present to you here. *The BEST!*



M-84B1



M-85B2

As the boss is restoring his Victorian home, he has spent dozens of hours looking for nice hand made, solid copper, drainage items. Not having found them, or, found them for a king's ransom, he decided to just make them....and we did. Naturally, as with all things we make for him, we stock them too. His daughter, *Raechel*, is showing you the items she hands to "daddy" when Dad works on their home on a nice sunshine week-end.

**M-80C** Fine hand made copper catch basin. 14" wide, 10 1/2" deep and 13 1/2" tall (without protruding Ø 4" pipe); 18" as shown. Weighs in at almost 6 pounds of solid copper.

**M-81P** Four foot length of hand made, Ø 4" copper pipe.

**M-82R** A 90° elbow, Ø 4", hand made from solid copper. Each arm is about 11" in length.

**M-83F** A 45° elbow, Ø 4", hand made from solid copper. Each arm is about 10 1/4" long.

**M-84B1** LW cast brass 4" pipe bracket with round ends.

**M-85B2** LW cast brass 4" pipe bracket with rococo ends. The contrast between the brass brackets and copper pipe is simply wonderful & when they age, both become gorgeous. These copper items are *not* precision machine made. They are hand made and reflect that ambience. You can see the solder joints and the items are slightly irregular being made by hand techniques unchanged for hundreds of years. If you require "perfect" do not buy these items. If you are looking for that antique look, these are definitely your cup of tea. Yes, there is a big end and a smaller end to each pipe component so that they slip into each other. Material thickness is .02" (0.5mm) which is heavier than the antiques we found.

